

Renka RS20 / RS25 – The ultimate sliding door system



RS20 | SLIM ALUMINIUM SLIDING DOORS



RS20 – MINIMAL SIGHTLINES AND MAXIMUM GLASS

Renka's breathtakingly beautiful Ultra-slim RS20 sliding doors give you the view you've always dreamed of in a contemporary thermally broken sliding door system.

As well as offering a stunning slim 20mm sightline where the panels meet, the system can offer panels up to 3 metres high and 2.2 metres wide. The system is designed to allow the top and bottom frames to be concealed as part of the build – giving a real feeling of a "wall of glass".

- ✓ 20mm sightline
- ✓ Panels up to 3 metres high
- ✓ Moving panels up to 320Kg
- ✓ uValues down to 1.3
- ✓ Moving corner & pocket door options
- ✓ Wide range of RAL colours

COLOURS AND FINISHES

The beautiful RS20 can be tailored to your specific requirements, with over 100 RAL colours and finishes available, including metallic and textured, in single and dual colour condition.



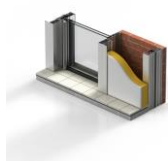
The RS20 is available in 2, 3, 4 and 6 panel configurations, allowing a maximum glazed area of 13.2 metres wide by 3 metres high. The system can also offer a 90 degree moving corner configuration, where 2 sets of RS20 can slide away from each other to reveal a view without and restriction from structural corner posts.

Renka RS20 / RS25 slim sliding doors

RS25 | SLIM ALUMINIUM SLIDING DOORS



The RS25 can offer moving corner and pocket door applications as well as double and triple glazed glass units of up to 52mm.



RS25 Key Features

- ✓ 25mm sightline
- ✓ Panels up to 4 metres high
- ✓ Manual moving panels up to 400Kg
- ✓ Motorised option to 700Kg
- ✓ Moving corner & pocket door options
- ✓ Wide range of RAL colours

The RS25 allows you to conceal the top, bottom and sides of the frame in the build.

As featured on

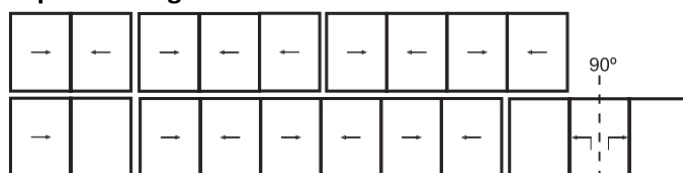


RS25 – BREAKING THE CONVENTIONS OF WHAT CAN BE ACHIEVED

The RS25 redefines what can be achieved with sliding doors – offering maximum panels of up to 4 metres wide and 4 metres high. The system offers both manual and motorised variants which can move panels of up to 400Kg (manual) or 700Kg (motorised).

Despite the huge panels that the RS25 can support, the system has a breathtakingly narrow 25mm sightline – creating a virtually uninterrupted glass vista.

Popular configurations



sales@renka.co.uk
www.renka.co.uk
0121 333 4665

Visit us at : 34-36 New John Street
 West. Birmingham. B19 3NB.



